

Erratum to: “MLKL-dependent signaling regulates autophagic flux in a murine model of non-alcoholic-associated fatty liver and steatohepatitis (J Hepatol 2020; 73: 616–627)”

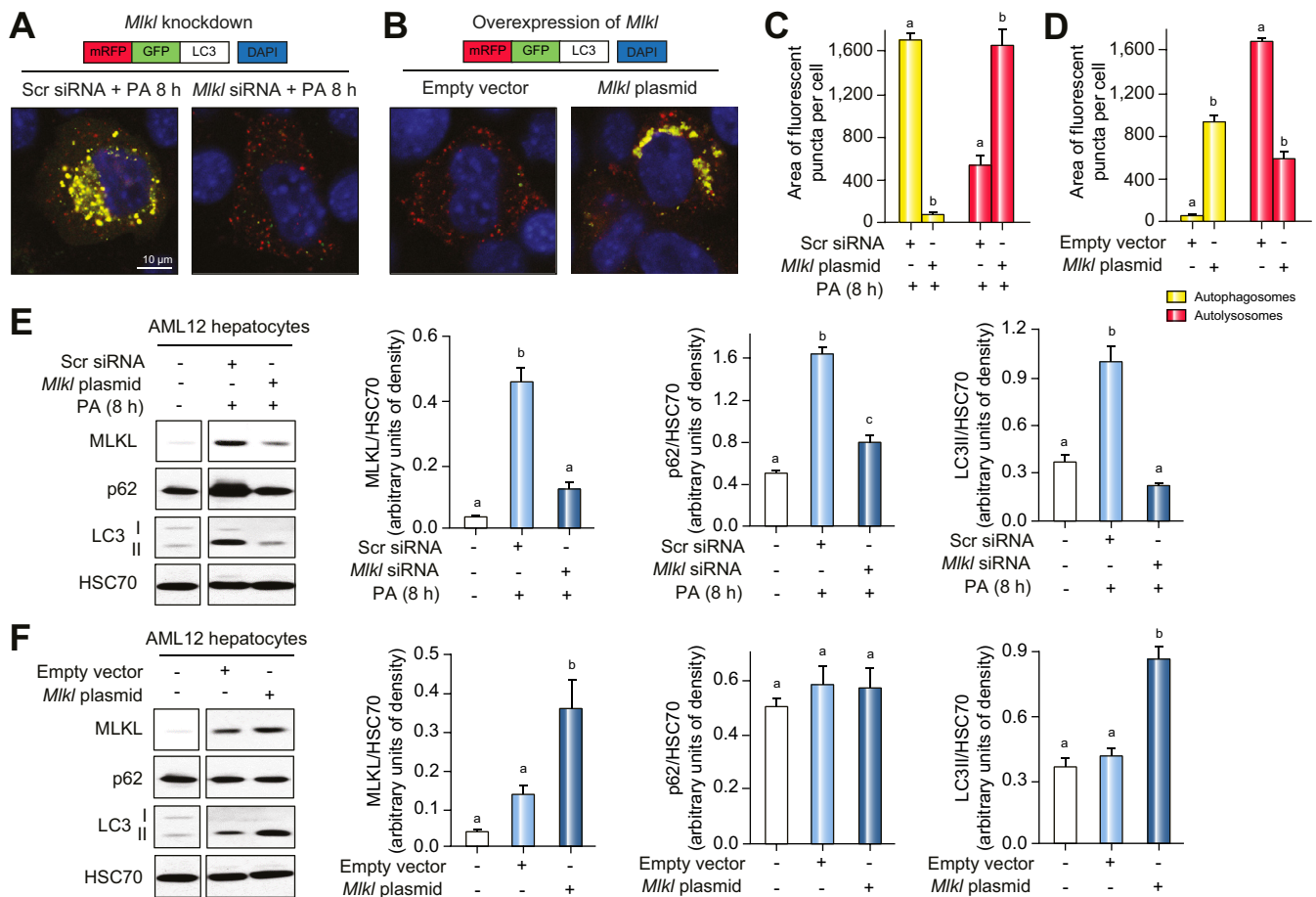
Xiaoqin Wu¹, Kyle L. Poulsen¹, Carlos Sanz-Garcia¹, Emily Huang¹, Megan R. McMullen¹, Sanjoy Roychowdhury^{1,3}, Srinivasan Dasarathy^{1,2,3}, Laura E. Nagy^{1,2,3,*}

¹Center for Liver Disease Research, Department of Inflammation and Immunity, Cleveland Clinic, Cleveland, OH, United States; ²Department of Gastroenterology and Hepatology, Cleveland Clinic, Cleveland, OH, United States; ³Department of Molecular Medicine, Case Western Reserve University, Cleveland, OH, United States

© 2020 European Association for the Study of the Liver. Published by Elsevier B.V. All rights reserved.

It has come to our attention that there was a mistake in Fig. 7 in the published version of our manuscript. The mistake occurred during the publication process and has resulted to a duplicated

‘Mlkl plasmid’ image within the panel in Fig. 7B. Please see the corrected figure below. We apologize for any inconvenience caused.



DOI of original article: <https://doi.org/10.1016/j.jhep.2020.03.023>.

* Corresponding author. Address: Cleveland Clinic, Lerner Research Institute/NE40, 9500 Euclid Ave, Cleveland OH 44195, USA. Tel.: 216-444-4021, fax: 216-636-1493.

E-mail address: nagyL3@ccf.org (L.E. Nagy).

<https://doi.org/10.1016/j.jhep.2021.01.006>



ELSEVIER